

LOG40M
Amateur Radio Software

By
Daniele Pistollato
IW3HMH



Quick Start Guide

By
Terry Genes G4POP

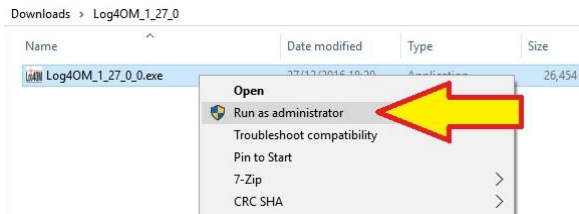
Log40M Quick Start

Installing Log4OM

Log4OM must be 'RUN' as an administrator, if it is not installed as such then some functions will not work!

First ensure that all other programs are closed (Not running)

To install and 'RUN' as an administrator first unzip the download file and then right mouse click on the install icon and select 'Run as an administrator' then follow the prompts.



When updating to a new version of Log4OM ensure that Log4om is closed and that all other programs are closed - It is not necessary to uninstall the old version but it is always wise to make a backup before updating.

Update by installing using 'RUN' as an administrator as detailed above

Initial Setup of Log4OM:

Installation

Ensure that Log4om is installed with Windows Administrator Privileges as above.

- 1 Locate the program icon or a shortcut in Windows Explorer.
- 2 Right-click the program icon or shortcut, and then click Run as administrator.
- 3 When the UAC message is displayed, do one of the following:
 - If you are logged on as a standard user, or if UAC is configured to always require credentials, enter the appropriate administrative credentials, and then click OK.
 - If you are logged on as an administrator and UAC is not configured to always require credentials, click Yes to start the application.

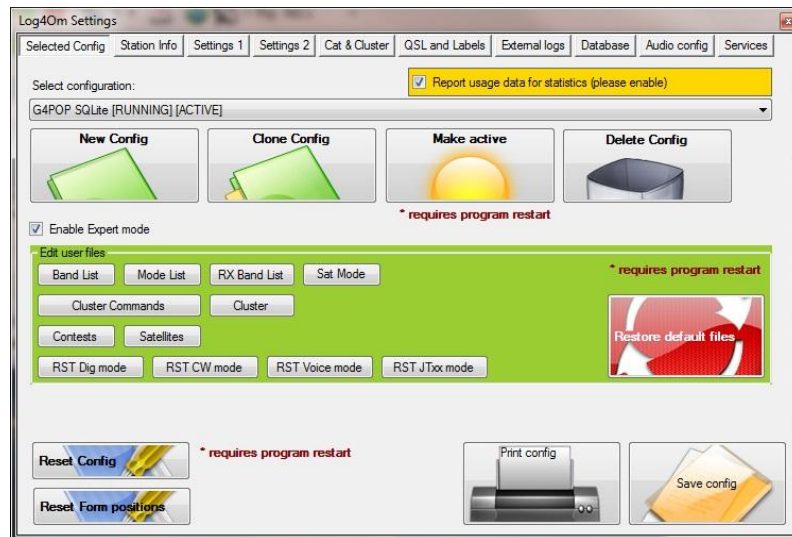
Initial setup steps

1. Fill in **ALL** of the "Options/Station Info tab" information fields.
2. Ensure that a database is created by following the instruction in this user guide "STARTING A NEW LOGBBOK"
3. Complete whichever of the other "Options" tabs are applicable

Unless steps 1 and 2 above are completed it is not possible to use LOG4OM

Selected Config

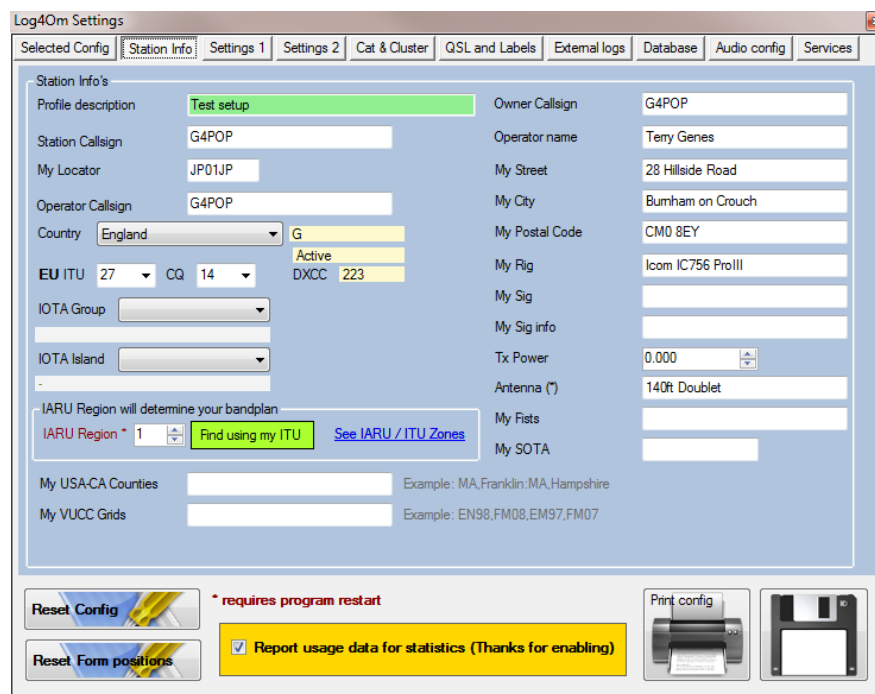
After installing the program, launch the program. The first screen will be the settings screen. Click on the 'Selected Config' tab and ensure that the information required for each tab is complete, in order for the program to operate and maintain the data correctly.



On first use of the program, the selected configuration will show 'New Configuration (Active)'. To change the configuration name in the next tab, click on the 'Station Info's' tab.

Station Info – Unless this tab is completed the program will not function

The "Profile description" will initially show 'New Configuration'. This can be changed as desired, perhaps to the user's call sign or a special event title.



Enter the appropriate data, including the station's call sign, (mandatory) plus any other relevant information.

Explanation of Callsign fields.

The ADIF system provides support for multiple callsign's which define the exact details of the station, operator and owner:

STATION CALLSIGN, this is the CALLSIGN USED OVER THE AIR.

e.g. A special event callsign being used to mark a special occasion - G100RSGB

OPERATOR CALLSIGN this is the CALLSIGN OF THE PERSON OPERATING THE STATION.

e.g. The station Callsign is G100RSGB but the OM at the microphone is IW3HMH

OWNER CALLSIGN is the CALLSIGN OF THE OWNER OF THE STATION

e.g. The callsign of the person that actually owns the radio equipment and building at which the equipment (Station) is located - Perhaps G4POP in the UK. (This is rarely used and it's not exposed in the edit screens as a dedicated field)

A possible scenario using the above field names and example callsign's.

STATION CALLSIGN: G100RSGB (Special event station celebrating 100 years of the Radio Society of Great Britain)

OPERATOR CALLSIGN: IW3HMH (The callsign of the operator that is using the station callsign being transmitted)

OWNER CALLSIGN: G4POP (Transmitting from the radio shack of G4POP which is located in the UK)

MAKE SURE THE CORRECT COUNTRY IS SELECTED, OTHERWISE THERE WILL BE ERRORS IN THE LOGBOOK.

Cat & Cluster

If connection to a radio is required go to the CAT & Cluster tab and select the required options.

Select, in the 'CAT SOFTWARE' section, either Hamlib or Omnirig.

*The Omnirig program must be downloaded and installed **before selecting it in LOG4OM** from <http://www.dxatlas.com/OmniRig/>*

Note: Omnirig has proven to be the most stable of the choices.

In the 'CAT & Cluster' area make the desired selections.

Log4om Settings

Selected Config | Station Info | Settings 1 | Settings 2 | **Cat & Cluster** | QSL and Labels | External logs | Database | Audio config | Services

CAT SOFTWARE

☐ Hamlib ☒ OMNIRig

CAT & Cluster

☒ Open CAT on program start

☒ Open Cluster on program start

☒ CAT will set MODE when following spot

☐ CAT will switch to Digital (Omniing only)

☐ Show cluster ungrouped

☒ Automatic Cluster Analysis

WARNING: Automatic Cluster Analysis is very disk intensive. Use is not recommended when working on slow disks or USB sticks

Cluster highlight colors

| | | | |
|----------------------------------|---------------------|------|------|
| Country not worked/confirmed | COUNTRY NOT WORKED | back | fore |
| Band/Mode not worked/confirmed | B/M NOT WORKED | back | fore |
| Worked/conf. (country/band/mode) | WORKED | back | fore |
| Station not worked | STATION UNWORKED | back | fore |
| Station worked | STATION WORKED | back | fore |
| Station worked same band | STATION WORKED S.B. | back | fore |
| Highlight | HIGHLIGHT | back | fore |

RESET

Cluster filters

- ☐ 160m
- ☒ 80m
- ☒ 60m
- ☒ 40m
- ☒ 30m
- ☒ 20m
- ☒ 17m

Reset Config * requires program restart

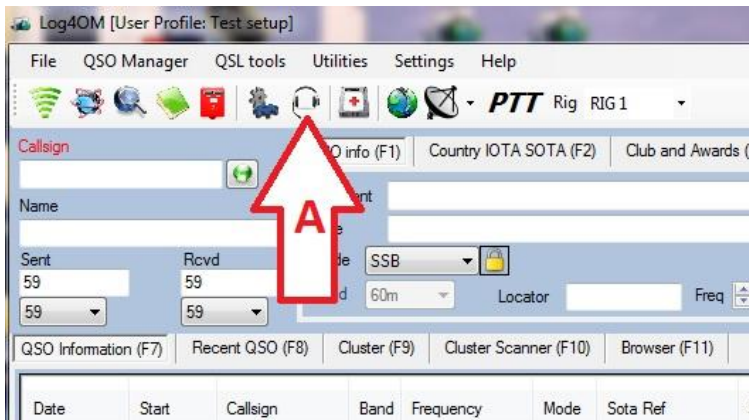
Reset Form positions

☒ Report usage data for statistics (Thanks for enabling)

Print config

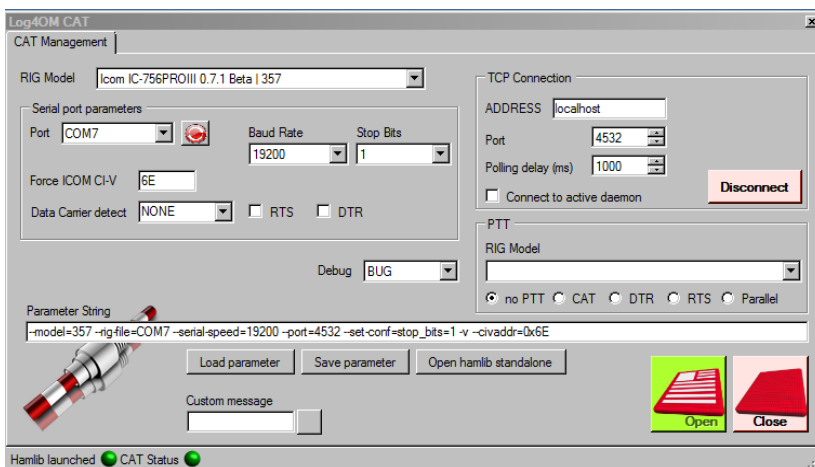
Radio connection

To open the 'Radio Connection' window click the icon identified by "A" below.



Depending on whether Hamlib or OmniRig for rig control is selected, the following will open:

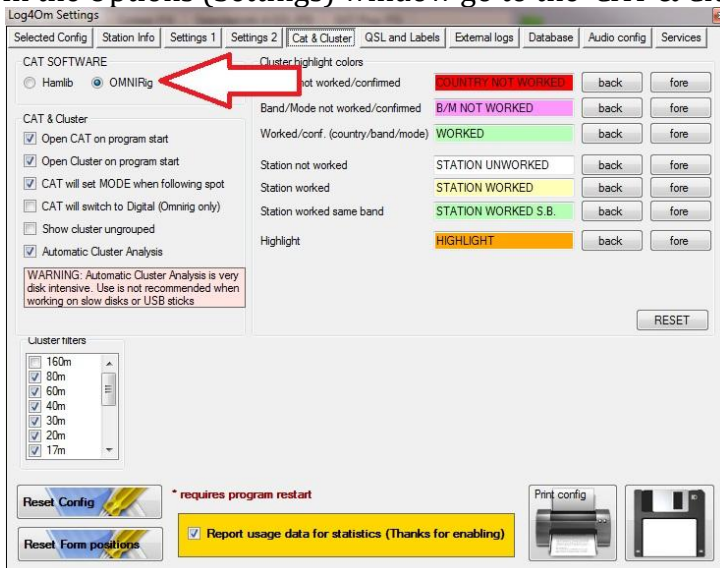
Hamlib control:



OmniRig control:

Download Omnirig from <http://dxatlas.com/OmniRig/> and install it. Then re-start LOG4OM

In the Options (Settings) window go to the 'CAT & Cluster' tab and select the Omnirig option.

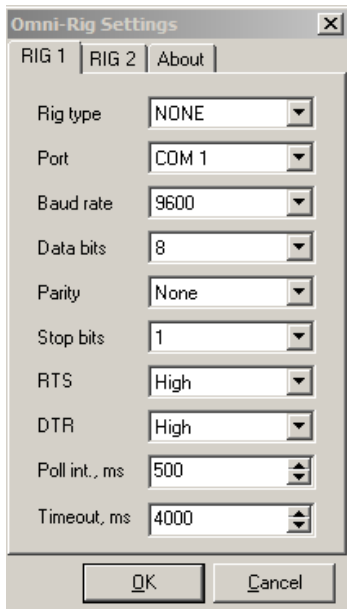


Click the 'Save Config' button.

In the main screen, click the 'CAT' icon.



Select the appropriate rig from the Rig Model Drop-down. Set the parameters for the equipment to be used and click OK.



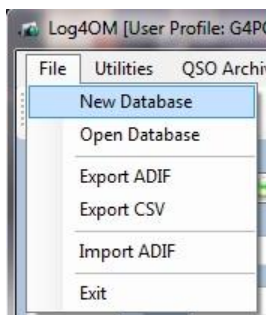
The CAT Status indicators at the bottom should now be GREEN indicating a successful connection.

Starting a New logbook!

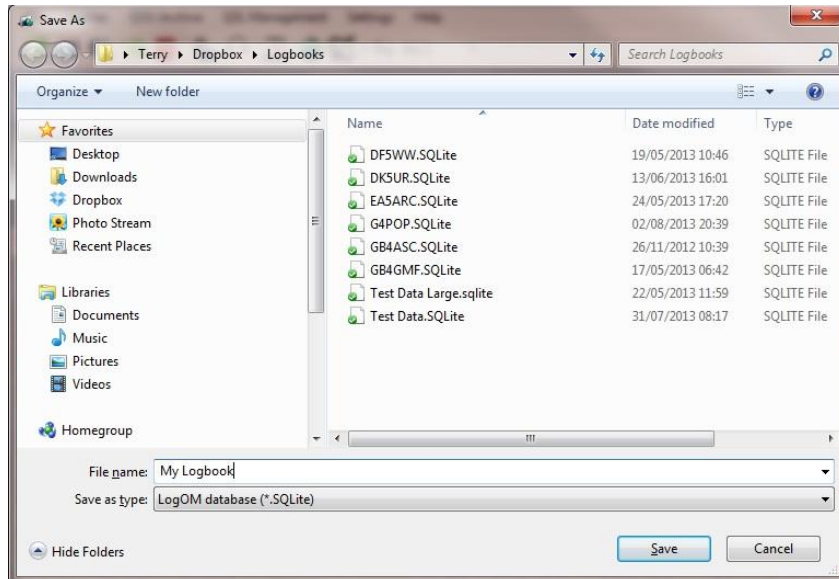
New Database

The user may have as many databases (Logbooks) as required e.g. Main call sign, Contest call sign or Special Event call sign etc.

1. Click the 'File' menu.
2. Select 'New Database'



Select a location to store the database and provide a name for the database.



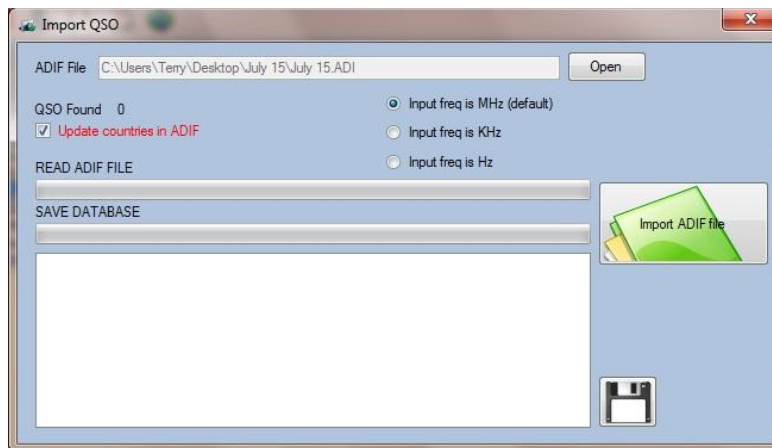
3. Click 'Save'

4. Enter QSOs in the input window or import an ADIF file created by another logbook programs

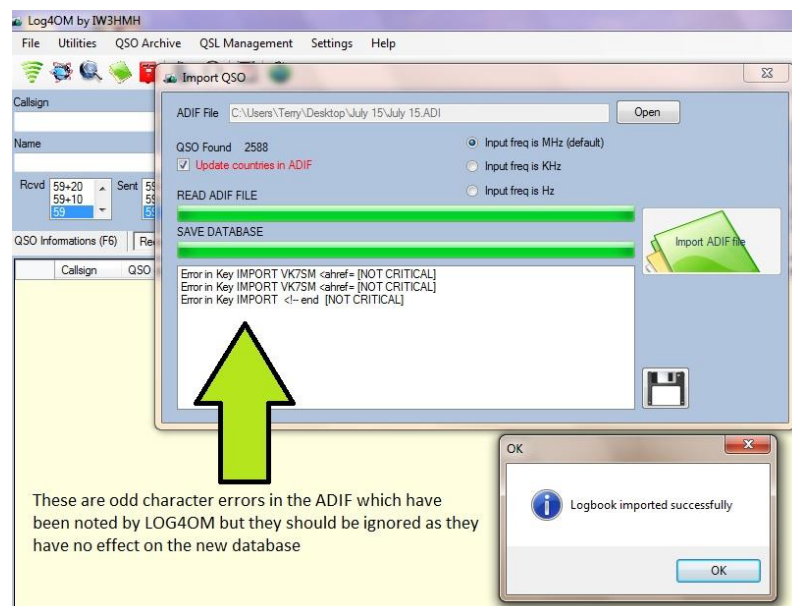
Importing an ADIF file

IMPORTANT. Before importing an ADIF, ensure that the latest data files from the 'Settings' menu has been downloaded.

1. In the 'File' menu select 'Import ADIF'
2. Click 'Open' and locate the ADIF file to be imported



3. If required check the 'Update countries in ADIF' check box (**Caution this selection could make undesirable changes to your data. If in doubt do not use it!**)
4. Click the Green 'Import ADIF file' button.



Some 'Error in key' messages (as shown above) may appear on the screen. If they say 'Not Critical' they can be ignored because they are reporting that LOG4OM has detected some character errors in the ADIF and corrected them.

5. Click 'OK' and close the import window.

A YouTube video of this procedure and many features of Log4OM is located here:

<https://www.youtube.com/watch?v=jnycCNvdaE0>

Information about all of the Log4OM features can be found in the main user guide.